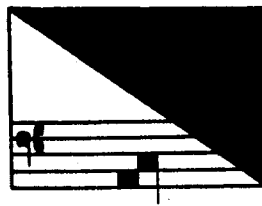


BENEDICT SCHULTHEISS  
MUTH- UND GEIST-ERMUNTRENDER CLAVIER-LUST  
1679 – 1680

Edited by  
RICHARD HUDSON



AMERICAN INSTITUTE OF MUSICOLOGY  
HÄNSSLER-VERLAG

1993  
69.210

# CONTENTS

## FOREWORD

Surviving Copies and Editions .....	IX
The Music .....	XI
The Transcriptions .....	XVI
Critical Notes .....	XX

## *MUHT- UND GEIST-ERMUNTRENDER CLAVIER-LUST / ERSTER THEIL*

### Suite in C Major

1. Praeludium .....	1
2. Allemande .....	2
3. Courante .....	3
4. Sarrabande .....	4
5. Gique .....	5

### Suite in G Major

6. Praeludium .....	6
7. Allemande .....	7
8. Courante .....	8
9. Sarrabande .....	9
10. Gique .....	9

### Suite in D Major

11. Praeludium .....	11
12. Allemande .....	12
13. Courante .....	14
14. Sarrabande .....	15
15. Gique .....	16

### Suite in A Minor

16. Praeludium .....	17
17. Allemande .....	18
18. Courante .....	19
19. Sarrabande .....	20
20. Gique .....	21

*MUTH- UND GEIST- ERMUNTRENDER CLAVIER-LUST / ANDERER THEIL*

Suite in E Minor

21.	Allemande	22
22.	Courante	23
23.	Sarrabande	24
24.	Gigue	25

Suite in F Major

25.	Allemande	26
26.	Courante	27
27.	Sarrabande	28
28.	Gigue	29

Suite in G Minor

29.	Allemande	30
30.	Courante	31
31.	Sarrabande	32
32.	Gigue	33

Suite in A Major

33.	Allemande	34
34.	Courante	35
35.	Sarrabande	36
36.	Gigue	36

Suite in B Minor

37.	Allemande	37
38.	Courante	39
39.	Sarrabande	40
40.	Gigue	40

Suite in C Minor

41.	Lamenta	41
42.	Courante	42
43.	Sarrabande	44
44.	Gigue	44

Muht- und Geist-ermuntrender Clavier-Lust

Erster Theil  
1679

[Suite in C Major]

1. Praeludium

Benedict Schultheiss

Musical notation for measures 1-5 of the Praeludium. The score is in C major, 3/4 time. The right hand features a melodic line with eighth and sixteenth notes, while the left hand provides a steady accompaniment of eighth notes. A measure rest of 5 is indicated above the fifth measure.

Musical notation for measures 6-10 of the Praeludium. The tempo marking **Allegro** is placed above the staff. The right hand continues with a more active melodic line, and the left hand maintains the accompaniment. A measure rest of 10 is indicated above the tenth measure.

Musical notation for measures 11-15 of the Praeludium. The right hand features a melodic line with some grace notes, and the left hand continues with the accompaniment. A measure rest of 15 is indicated above the fifteenth measure.

Musical notation for measures 16-20 of the Praeludium. The right hand has a melodic line with some grace notes, and the left hand continues with the accompaniment. A measure rest of 20 is indicated above the twentieth measure.