

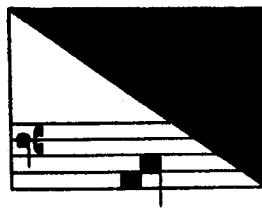
CORPUS OF EARLY KEYBOARD MUSIC

27

SAMUEL MARESCHAL  
SELECTED WORKS

Edited by

JEAN-MARC BONHOTE



AMERICAN INSTITUTE OF MUSICOLOGY  
HÄNSSLER-VERLAG

1967  
69.270

# CONTENTS

FOREWORD	VII-X
FACSIMILES	XI-XII
MUSIC	
Ballet Cachez beaux yeux	1
Ballet joly	1
Fuga	2
Fuga im A	2
Fuga im D	3
Die zwölf toni oder modi utraque scalae	
Primi toni - <i>Dorius</i>	3
Secundi toni - <i>Hypodorius</i>	4
Tertii toni - <i>Phrygius</i>	4
Quarti toni - <i>Hypophrygius</i>	4
Quinti toni - <i>Lydius</i>	5
Sexti toni - <i>Hypolydius</i>	5
Septimi toni - <i>Mixolydius</i>	5
Octavi toni - <i>Hypomixolydius</i>	6
Noni toni - <i>Aeolius</i>	6
Decimi toni - <i>Hypoeolius</i>	6
Undecimi toni - <i>Ionicus</i>	7
Duodecimi toni - <i>Hypoionicus</i>	7
Pseaume VI	8
Ps. 6 - Ne vueille pas Ô Sire	8
Pseaume VIII	9
Ps, 8 - O nostre Dieu et Seigneur	9

# Ballet Cachez beaux yeux

Musical score for 'Ballet Cachez beaux yeux'. The score is written in 4/4 time and consists of three systems of two staves each (treble and bass clef). The first system contains 8 measures. The second system contains 8 measures. The third system contains 8 measures, with a dashed line and a '1.' above the final measure indicating a first ending. The music features various rhythmic patterns, including eighth and sixteenth notes, and rests.

1. This measure is missing in ms F IX 49, but stands in ms F IX 50.

# Ballet joly

Musical score for 'Ballet joly'. The score is written in 4/4 time and consists of three systems of two staves each (treble and bass clef). The first system contains 8 measures, with a first ending (1.) and a second ending (2.) indicated. The second system contains 8 measures. The third system contains 8 measures, with a '2' above the first measure and the text 'alia varatio' above the second measure. The music features various rhythmic patterns, including eighth and sixteenth notes, and rests.