

CORPUS OF EARLY KEYBOARD MUSIC

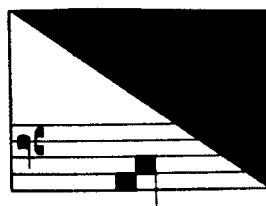
42

LUIGI BATTIFERRI

RICERCARI

Edited by

G. G. BUTLER



AMERICAN INSTITUTE OF MUSICOLOGY
HÄNSSLER-VERLAG

1981

69.420

Copyright © 1981 American Institute of Musicology
Hänssler-Verlag, D 7303 Neuhausen-Stuttgart
Order No. 69.420
ISBN 3-7751-0525-5

CONTENTS

FOREWORD	IX
DEDICATION	X
COMPOSER'S PREFACE	X
MUSIC	
Ricercaro Primo. à 4. con un soggetto solo	1
Ricercaro Secondo. à 4. con un soggetto riversato	4
Ricercaro Terzo. à 4. con un soggetto solo	7
Ricercaro Quarto. à 4. con due soggetti	10
Ricercaro Quinto. à 4. con due soggetti	13
Ricercaro Sesto. à 4. con due soggetti	16
Ricercaro Settimo. à 4. con tre soggetti	19
Ricercaro Ottavo. à 4. con tre soggetti	23
Ricercaro Nono. à 4. con tre soggetti	26
Ricercaro Decimo. à 4. con quattro soggetti	29
Ricercaro Undecimo. à 5. con cinque soggetti	32
Ricercaro Duodecimo. à 6. con sei soggetti	34

Ricercaro primo.

Con un soggetto solo.

Measures 1-4 of the piece. The music is in G minor (one flat) and 3/4 time. The right hand features a series of chords and single notes, while the left hand plays a rhythmic accompaniment of eighth notes.

Measures 5-8. Measure 5 is marked with a '5'. Measure 7 contains a first ending bracket labeled '(b)'. The right hand continues with melodic lines and chords, and the left hand maintains the eighth-note accompaniment.

Measures 9-14. Measure 10 is marked with a '10'. The right hand features more complex chordal textures and melodic fragments, while the left hand continues with the eighth-note accompaniment.

Measures 15-19. Measure 15 is marked with a '15'. The right hand has a more active melodic line with some chromaticism, and the left hand continues with the eighth-note accompaniment.

Measures 20-23. Measure 20 is marked with a '20'. The right hand features a series of chords and single notes, and the left hand continues with the eighth-note accompaniment.