

JACOBUS CLEMENS non PAPA

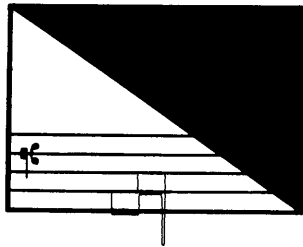
○PERA ○MNIA

Edidit

K. Ph. Bernet Kempers

V

Missa Spes Salutis  
Missa Gaude lux Donatiane  
Missa Languir my fault



Copyright 1958  
by  
Armen Carapetyan

Printed in U.S.A.

## CONTENTS

|                                     |     |
|-------------------------------------|-----|
| FOREWORD                            | I   |
| MUSIC                               |     |
| Missa Spes Salutis                  | 1   |
| Missa Gaude lux Donatiane           | 35  |
| Missa Languir my fault              | 69  |
| Languir me fais (cbanson) / Sermisy | 103 |

# MISSA SPES SALUTIS

## KYRIE

Jacobus Clemens, non Papa

Musical score for the beginning of the Kyrie, measures 1-4. The score is in C major and 4/4 time. It features four staves: two vocal staves (Soprano and Alto) and two piano accompaniment staves (Right and Left Hand). The lyrics are: Ky-ri-e e-

Musical score for the Kyrie, measures 5-8. The score continues with the lyrics: le-ri-son, Ky-ri-e e-le-ri-son, Ky-ri-e e-le-ri-son, Ky-ri-e e-le-ri-son. The vocal parts are more active, with the Soprano and Alto parts having more melodic lines. The piano accompaniment provides harmonic support.

Musical score for the Kyrie, measures 9-12. The score continues with the lyrics: e-le-ri-son, Ky-ri-e e-le-ri-son, Ky-ri-e e-le-ri-son, Ky-ri-e e-le-ri-son. The vocal parts continue their melodic lines, and the piano accompaniment remains consistent.

20

e le son, Ky ri e le son.  
 Ky ri e le son.  
 Ky ri e le son.  
 Ky ri e le son.

25

e le son, e le son.  
 Ky ri e le son.  
 Ky ri e le son.

30

Chri ste e le son Chri ste e le son.  
 Chri ste e le son, Chri ste e le son.  
 Chri ste e le son.

10

ste e le son, Chri ste e le son.  
 ste e le son, Chri ste e le son.  
 son, Chri ste e le son, Chri ste e le son.