

CORPVS MENSVRABILIS MVSICAE

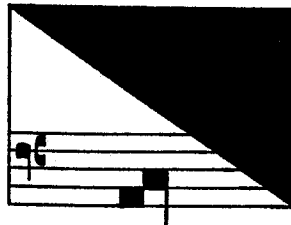
*II*

EARLY FIFTEENTH-CENTURY MUSIC

3

Edited by

Gilbert Reaney



AMERICAN INSTITUTE OF MUSICOLOGY

1966



# TABLE OF CONTENTS

	Page
INTRODUCTION	I
ACKNOWLEDGEMENTS	IV
SOURCES	IV
ORDER OF CLASSIFICATION	V
WORKS CITED	V
ABBREVIATIONS	VI
METHOD OF TRANSCRIPTION	VI
CRITICAL NOTES	VI
Richard Loqueville	VII
Estienne Grossin	XI
R. Liebert	XVII
Benoit	XXII
POETICAL TEXTS	XXV
MUSIC	
Richard Loqueville	
1. Je vous pri que j'aye un baysier	1
2. Qui ne veroit que vos deulx yeulx	1
3. Puisque je suy amoureux	2
4. Pour mesdisans ne pour leur faulx parler	3
5. Quant compaignons s'en vont juer	4
6. Et in terra	5
7. Et in terra	8
8. Et in terra	11
9. Patrem	14
10. Sanctus <i>Tro</i> Qui januas mortis confregisti	18
11. O flos in divo, are Sacris pignoribus dotata	21
12. O regina clementissima	24
Estienne Grossin	
13. Va t'ent, souspir, je t'en supplie	25
14. Tres douchement et soutiement	26
15. Kyrie Trompetta	28
16. Et in terra Trompetta	31
17. Patrem Trompetta	34
18. Sanctus Trompetta	40
19. Kyrie	42
20. Et in terra	44
21. Et in terra	46
22. Patrem	49
23. Sanctus	53
24. Agnus dei <i>Tro</i> pro salute hominum	55
25. Agnus dei	57

26. Mater dulcis, mater pia	58
27. Imera dat hodierno	59

R. Libert

28. Mon cuer s'en va d'umble vouloir	62
29. Mourir me voy, il est pic de ma vie	63
30. Salve, sancta parens (Introit)	64
31. Kyrie	66
32. Et in terra	69
33. Benedicta et venerabilis (Gradual)	72
34. Alleluia. V. Ora pro nobis	75
35. Ave, mundi gaudium (Sequene)	78
36. Gaude, Maria virgo, cunctas (Tract)	80
37. Patrem	81
38. Ave, Maria (Offertory)	86
39. Sanctus	88
40. Agnus dei	92
41. Beata viscera (Communion)	93
42. Kyrie	95

*Missa de beata virgine*

Benoit

43. De cuer joieux je veuil chanter	97
44. Gaude, tu baptista Christi	98
45. Virgo Maria, non est tibi similis	102
46. Puer qui natus est nobis	103
47. Lucis creator optime	104
48. Tibi Christe splendor patris	106

ADDENDA AND CORRIGENDA

- P. VII, col. 2, line 1: read "LEUR", not "EUR".
- P. VII, col. 2, line 7: closing bracket om. after "only".
- P. VIII, col. 2, line 45 up: read "EDGDE" for last 5 notes.  
SSBSB
- P. IX, col. 1, lines 15-16: read "Ao 3c 4a 5<sup>1</sup> 5<sup>2</sup> 5<sup>3</sup> 5<sup>4</sup> // 63a".  
-cto-rem ce-li et ter- -tris
- P. IX, col. 1, line 17 up: closing bracket om. after "Tr 93".
- P. X, col. 1, line 12 up: read "till 60 // intonation SSBSSSBSSSL //".
- P. XI, col. 2, lines 13-14: read  
"CONTRATENOR: c<sub>4</sub> clef // red notes: 11, 16, 19-20, 22, 28 // 11<sup>2</sup> F ms //  
TENOR: c<sub>4</sub> clef // red notes: 2, 5, 8-9, 11-12, 15, 18, 23, 26, 28 //".
- P. XI, GROSSIN, no. 13, title: read "VA T'ENT, SOUSPIR...".
- P. XI, col. 2, line 10 up: insert "8ab" after "4ab".
- P. XII, col. 2, line 8: read "4<sup>5</sup>", not "5<sup>5</sup>".
- P. XIII, col. 2, lines 20-24: read  
"Ao, Kras 50<sup>1</sup> 50<sup>2</sup> 50<sup>3</sup> 50<sup>4</sup> 50<sup>5</sup> //  
Em 50<sup>3</sup> 50<sup>4</sup> 50<sup>5</sup> 51a 51a  
de - pre - ca - ti - o -  
Ao, Em, Kras 51a 51c 52<sup>1</sup> 52<sup>2</sup> 52<sup>3</sup> (s.m.v.) //".  
-nem no - stram. Qui se-
- P. XIV, col. 1, line 6 up: *BL* should be in italics.
- P. XV, col. 1, line 24: // om. after *Tr*.
- P. XV, col. 1, lines 26-27: a single, not a double line should follow the music.
- P. XV, col. 1, line 2 up: after "58a B BU", insert "Ao, Tr // 58 (S) following Ao, Tr //  
60<sup>1</sup> F BL, Ao // 65b S BL, BU // 67 S BU;".
- P. XV, col. 2, line 18: read "26<sup>4</sup> A Ao".
- P. XV, col. 2, line 28: read "67 S BU, Ao, Tr".
- P. XVI, col. 1, line 7 up, no. 24, title: read "AGNUS DEI *Tr*o PRO SALUTE  
HOMINUM".
- P. XVII, col. 2, line 14: insert "// 32<sup>1-2</sup> S" at beginning of line.
- P. XVIII, col. 2, line 18 up: "ic" om. over "-cta".
- P. XVIII, col. 2, line 10 up: delete.
- P. XIX, col. 1, line 2, read "intonation 5-6".
- P. XIX, col. 1, line 18 up: read "... to me...".
- P. XX, col. 1, line 6: read "37<sup>3</sup>", not "3<sup>3</sup>".
- P. XX, col. 2, line 18 up: the "O" over the "C" should also have pointed brackets.
- P. XXI, col. 2, line 8: add "26 flat om. Em // 43a sharp om. Em // 61 (S) Em //".
- P. XXII, col. 2, line 4: read "1<sup>3</sup>", not "13".
- P. XXII, col. 2, line 27: add "26b S ms //".
- P. XXII, no. 44, title: read "GAUDE, TU...".
- P. XXIII, col. 1, line 23: opening bracket om. before "26".
- P. XXIII, col. 2, end of critical notes to no. 46: add  
"CONTRATENOR: f<sub>4</sub> clef; dim. equivalent //  
TENOR: f<sub>4</sub> clef; dim. equivalent // mensuration signs: C: 1".
- P. XXIV, col. 1, line 13-14 up: read "a Ga ba GF Z //".  
MSMSMMM
- P. XXIV, col. 1, line 9: read "versions".
- P. XXIV, col. 2, lines 13 and 15 up: read "28<sup>5-7</sup> G F Z //".  
M · s
- P. XXV, col. 1, line 5: read "s'aray".
- P. XXVI, nos. 1 and 2 should be numbered 13 and 14.
- P. XXVII, line 18 of "Mon cuer s'en va": read "accompagnié".
- P. XXVII, nos. 14, 15, 2 and 3 should be numbered 26, 27, 29 and 35, while  
"Mon cuer s'en va" should be numbered 28.
- P. XXVIII, nos. 1, 2 and 6 should be numbered 43, 44 and 48.
- P. XXVIII, col. 2, line 7 of "Gaude, tu baptista": read "Gaude, tu quod...".
- P. 7, Cantus 2, bar 90<sup>1</sup> should be an eighth note.
- P. 9, T, bar 30<sup>2</sup>: read A.
- P. 20, Cantus 2, bar 43<sup>1</sup> should be an eighth note.
- P. 21, Cantus 1, bar 77: each group of triplets should have a "3" over it.
- P. 22, T, bar 31b: dot om. after quarter note rest.
- P. 30, Cantus 1 and 2, bar 41: first and second notes should be tied.
- P. 36, Trompetta, bar 41<sup>5</sup>: read as an eighth note plus an eighth note rest.
- P. 37, ContraT, bar 87<sup>4</sup> should be followed by a quarter note rest.
- P. 38, Cantus 1, bar 113<sup>1-2</sup> should be tied.
- P. 47, T and ContraT, bar 25a: a dot should follow.
- P. 54, T, word "sunt" should be under bar 34c.
- P. 59, syllable "ca" should be under bar 60<sup>3</sup>.
- P. 68, Cantus, bar 69<sup>2</sup> should be an eighth note.
- P. 79, ContraT, bar 66<sup>5</sup> should be a quarter, not an eighth note.
- P. 80, line 1 of plainsong: syllable "vir-" should have notes E-D-E.
- P. 88, no. 39, Cantus, bar 2c: quarter note "c" om.
- P. 94, T, bar 14: flat should be two notes earlier.
- P. 100, bar 25<sup>7</sup> should be a sixteenth note.

1

RICHARD LOQUEVILLE

Musical score for Contratenor and Tenor, measures 1-5. The Contratenor part is on a single staff with a treble clef, and the Tenor part is on a single staff with a bass clef. The lyrics 'Je' are written at the end of the first measure.

Musical score for Contratenor and Tenor, measures 6-10. The lyrics are: 'vous pri que j'ay - e un bay - si - er // de vo bel - le bou - che ver -'.

Musical score for Contratenor and Tenor, measures 11-15. The lyrics are: 'meil - - - le; // sa - ray joy - e non pa reil - -'.

Musical score for Contratenor and Tenor, measures 16-20. The lyrics are: 'le // de che biel jour de may pri - mier. //'

2

Musical score for Contratenor and Tenor, measures 21-25. The Contratenor part is on a single staff with a treble clef, and the Tenor part is on a single staff with a bass clef.