

CORPVS MENSVRABILIS MVSICÆ

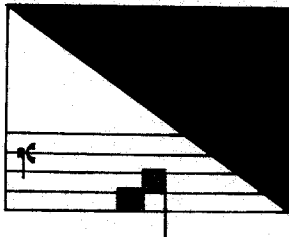
15

LOYSET COMPERE
Opera Omnia

Edidit

Ludwig Finscher

II



1959

AMERICAN INSTITUTE OF MUSICOLOGY

Copyright 1959
by
Armen Carapetyan

Printed in Germany

CONTENTS

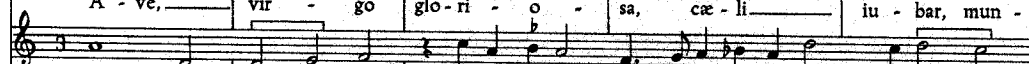
FOREWORD	I
FACSIMILES	V
MUSIC	
[Missa] Galeazescha [de Beata Virgine]	1
[Missa de D. N. J. C.]	26
[Missa in Nativitate D. N. J. C.]	41

[MISSA] GALEAZESCHA
[de Beata Maria Virgine]

Loco Introitus

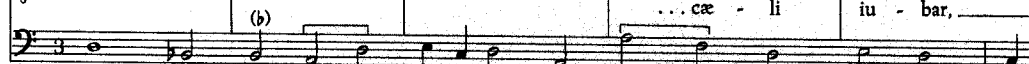
Loyset Compère


[Superius] 
A - ve, vir - go glo - ri - o - sa, cæ - li iu - bar, mun -

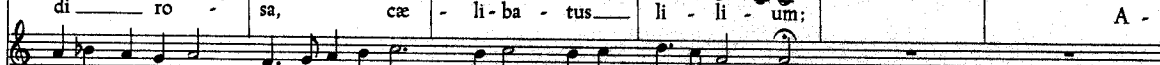
Altus 
A - ve, vir - go glo - ri - o - sa, cæ - li

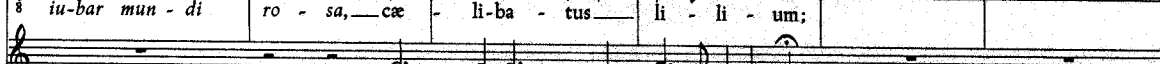
Tenor I 
A - ve, vir - go glo - ri - o - sa, ...

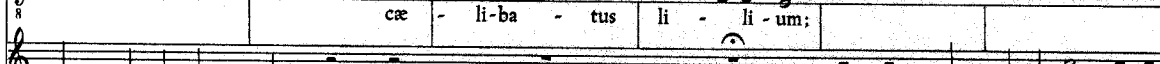
Tenor II 
... cæ - li iu - bar,

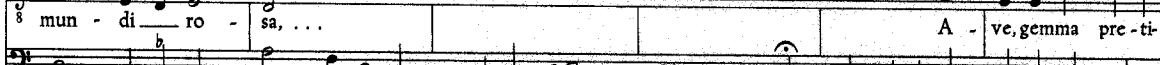
Bassus 
A - ve, vir - go glo - ri - o - sa, cæ - li iu -

6 
di ro - sa, cæ - li - ba - tus li - li - um; A -


iu - bar mun - di ro - sa, cæ - li - ba - tus li - li - um;


cæ - li - ba - tus li - li - um;


mun - di ro - sa, ... A - ve, gemma pre - ti -


bar mun - di ro - sa, cæ - li - ba - tus li - li - um; A - ve, gemma pre - ti - o - sa,

12 
ve, gem - ma pre - ti - o - sa, su - per so - lem spe - ti - o -


A - ve, gem - ma pre - ti - o - sa, su - per so - lem spe - ti - o - sa, ...


... su - per so - lem spe - ti - o - sa, ...


o - sa, ... vir - gi - na le gau - di -


su - per so - lem spe - ti - o - sa, vir - gi - na - le gau - di - um.