

CORPVS MENSVRABILIS MVSICAE

22

ALEXANDRI AGRICOLA

(1446-1506)

# Opera Omnia

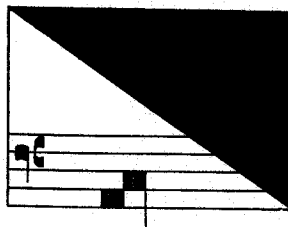
Edidit

Edward R. Lerner

II

Missæ

Fragmenta missarum



1963

AMERICAN INSTITUTE OF MUSICOLOGY

© 1963  
by  
Armen Carapetyan

# CONTENTS

FOREWORD	I
CRITICAL NOTES	
I. Polyphonic setting of the chant cycle for Easter: <i>Missa Paschalis</i>	II
II. Masses without a cantus firmus	
a. <i>Missa primi toni</i>	V
b. <i>Missa secundi toni</i>	VI
c. <i>Missa sine nomine</i>	VII
III. Settings of isolated movements	
A. On a secular cantus firmus	
a. <i>Credo Je ne vis oncques I</i>	X
b. <i>Credo Je ne vis oncques II</i>	X
B. On a sacred cantus firmus: <i>Credo Vilayge</i>	XI
C. Mass sections without a cantus firmus: <i>Credo-Sanctus Sine nomine</i>	XII
MUSIC	
I. Polyphonic setting of the chant cycle for Easter: <i>Missa Paschalis</i>	1
II. Masses without a cantus firmus	
a. <i>Missa primi toni</i>	23
b. <i>Missa secundi toni</i>	47
c. <i>Missa sine nomine</i>	78
III. Settings of isolated movements	
A. On a secular cantus firmus	
a. <i>Credo Je ne vis oncques I</i>	94
b. <i>Credo Je ne vis oncques II</i>	103
B. On a sacred cantus firmus: <i>Credo Vilayge</i>	114
C. Mass sections without a cantus firmus: <i>Credo-Sanctus Sine nomine</i>	125

# Missa Paschalis

Alexander Agricola

S Kyrie Ky - - -

CT Kyrie Ky - - - ri - e

T Kyrie Ky - - - ri -

B Kyrie Ky - - - ri -

5

- - ri - e e - - lei - -

e - lei - -

e e - -

e e - lei - -

10

- - - son.

- - son e - lei - - son.

lei - - son.

- - - son.

15

Chri - ste e - lei - - son. Chri - -

Chri - -

Chri -

Chri - - ste e - lei -