

CORPVS MENSVRABILIS MVSICÆ

29

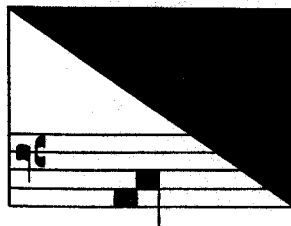
Companion volume to

MUSICOLOGICAL STUDIES AND DOCUMENTS 7

FOURTEENTH-CENTURY MASS MUSIC
IN FRANCE

Edited by

H. Stäblein-Harder



1962

AMERICAN INSTITUTE OF MUSICOLOGY

© 1962

by Armen Carapetyan

The present volume contains music discussed in *Musico-logical Studies and Documents 7* bearing the same title as here. While for technical reasons the critical text appears in the series *MSD* and the music in the series *CMM*, the two volumes constitute, of course, a whole. Nevertheless, the music may be acquired as such, and for that reason it is available to subscribers or purchasers of the series *CMM*, with or without its companion volume, *MSD 7*. On the other hand, it is almost inconceivable that *MSD 7*, the critical text, can be meaningful without its companion volume, the present publication.

The General Editor.

TABLE OF CONTENTS

	page
I. KYRIE	
<i>Kyrie Compositions in Motet Style</i>	
1. Barcelona C No. 7	1
2. Apt No. 1	3
3. Kyrie by Iohannes Lambuleti of the Sorbonne Mass	6
4. Apt No. 10, by Guymont	7
5. Kyrie of the Toulouse Mass	8
<i>Kyrie Compositions in Discant Style</i>	
6. Ivrea No. 77	9
7. Barcelona A No. 4	10
8. Ivrea No. 27	10
9. Apt No. 6, by Perrinet	11
10. Apt No. 3	12
11. Apt No. 4	12
12. Apt No. 35 [by Iohanes Graneti]	14
13. RU ₁ No. 11	15
14. Apt No. 2	15
15. Apt No. 9	17
16. Apt No. 11, by Defronciaco	19
<i>Kyrie Compositions in Simultaneous Style</i>	
17. Tournai fol. 33	20
18. Ivrea No. 49 [by Chipre]	20
19. Barcelona C No. 1	21
II. GLORIA	
<i>Gloria Compositions in Motet Style</i>	
20. Ivrea No. 61 [by Loys?]	22
21. Ivrea No. 44	23
22. Ivrea No. 42	26
23. Ivrea No. 45	28
24. Apt No. 12, by Depansis	30
<i>Gloria Compositions in Discant Style</i>	
25. Apt No. 34	32
26. Barcelona C No. 8, by Peliso	37
27. Ivrea No. 50	39

28. Ivrea No. 25 [„Baralipton“]	45
29. Barcelona-Gerona No. 1	46
30. Barcelona A No. 3	49
31. Barcelona A No. 5	51
32. Apt No. 38 [by Baudet Cordier]	52
33. Madrid M. 1361 fol. 198v—199	54

Gloria Compositions in Simultaneous Style

34. Apt No. 8, by Chassa	56
35. Apt No. 37, by Susay	57
36. Gloria [by Iohannes Lambuleti?] of the Sorbonne Mass	59
37. Ivrea No. 63	60
38. Ivrea No. 62	63

III. CREDO

Credo Compositions in Motet Style

39. Cambrai 1328 fol. 1	66
40. Ivrea No. 59	67
41. Ivrea No. 46	70
42. Ivrea No. 57	73
43. Ivrea No. 48	77
44. Ivrea No. 56	80
45. Ivrea No. 55, by Orles	83
46. Ivrea No. 47	86

Credo Compositions in Discant Style

47. Apt No. 46, by Sortes	89
48. Apt No. 47, by Pellison	91
49. Barcelona-Gerona No. 3, by Jo. Alamani	94
50. Ivrea No. 52	96
51. Apt No. 44, by Tailhandier	98
52. Apt No. 42, by Tapissier	101

Credo Compositions in Simultaneous Style

53. Apt No. 41, by Jacobus Murrin	105
54. Apt No. 39	107
55. Apt No. 40, „Bonbarde“ [by Perrinet?]	110

IV. SANCTUS

Sanctus Compositions in Motet Style

56. Barcelona C No. 4	114
-----------------------	-----

57. Apt No. 15	117
58. Sanctus of the Toulouse Mass	118
<i>Sanctus Compositions in Discant Style</i>	
59. Apt No. 13, by Fleurie	120
60. Apt No. 27	121
61. Apt No. 43, by Tapissier	122
<i>Sanctus Compositions in Simultaneous Style</i>	
62. Tournai fol. 32v	123
63. Sanctus [by Iohannes Lambuleti?] of the Sorbonne Mass	123
64. Ivrea No. 58	124
65. Gerona No. 4	126
66. Ivrea No. 79	127

V. AGNUS

<i>Agnus Compositions in Discant Style</i>	
67. Agnus of the Toulouse Mass	130
68. Apt No. 14	130
<i>Agnus Compositions in Simultaneous Style</i>	
69. Barcelona B No. 2	131
70. Agnus [by Iohannes Lambuleti?] of the Sorbonne Mass	131
71. Cambrai 1328, fol. 6—6v, 5	132
72. Barcelona C No. 5	133

VI. COMPOSITIONS OF THE „ITE, MISSA EST“ OR “BENEDICAMUS DOMINO”

73. Ivrea No. 11	135
74. Toulouse Mass	138
75. Benedicamus domino of the Sorbonne Mass	139
76. Cambrai 1328 fol. 18v—19	139

VII. APPENDIX

77. Apt No. 45	141
78. Madrid M. 1361 fol. 178—178v — Ivrea No. 81	143

I. KYRIE

KYRIE COMPOSITIONS IN MOTET STYLE

1. Barc C No. 7

fol. 9v

fol. 10

fol. 10

5

Rex im-men-se ma-ie-sta-tis Et summe poten-ti-e, Vi-ve fons vir-gi-ni-ta-tis, Ma-gne pro-vi-den-ti-

Dul-cis, po-tens, pa-ter pi-e:

TENOR REX IN MENSE MAGESTATIS

10

e, Spes cuncte fe-li-ci-ta-tis, Lau-an-da ve-ni-e, Al-me iudex e-qui-ta-tis, Dispen-sa-tor so-bri-e

Me-ri-tis san-cte Ma-ri-

15

20

In di-e ca-la-mi-ta-tis: Lu-men re-ful-gen-ti-e, Tu-e no-bis con-vo-ca-ris, Pan-de pul-ve-ra fa-ci-

-e, Su-per a-s-tra se-dens dux, Gen-ti-um de-le-pec-ca-

25

30

e, Ky-ri-e ley-son, Ky-ri-e ley-son.

ta, Ky-ri-e ley-son. Fi-

35

Lux de sancta lu-ce na-ta Mysti-co spi-ra-mi-ne Et Ma-ri-a pre-ser-va-ta Pi-o con-ser-va-mi-

-li pa-tris, o rex for-tis,

II