

CORPVS MENSVRABILIS MVSICAE

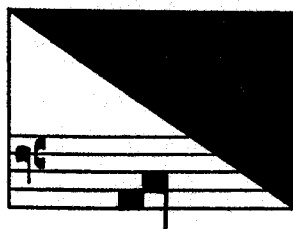
34

MATTHAEVS PIPELARE
OPERA OMNIA

Edited by

Ronald Cross

I



AMERICAN INSTITUTE OF MUSICOLOGY

1966

TABLE OF CONTENTS

PROCEDURE IN THE TRANSCRIPTION	IX-XI
CRITICAL COMMENTARY	XIII-XVIII
FACSIMILES	
1. Cambrai, Bibliothèque Municipale, Ms. 125-8, fol. 123 ^r	XIX
2. Bruxelles, Bibliothèque Royale, Ms. 215-216, fol. 33 ^v -34 ^r	XX
MUSIC	
CHANSONS	
1. a Een vrolic wesen	1
b Frolich wessen (keyboard version)	3
2. Ic weedt een molenarinne	4
3. Mijns liefskins bruyn ooghen	6
4. Morkin ic hebbe	7
5. Fors seulement (I)	9
6. a Fors seulement (II)	11
b Fors seulement (II) (keyboard version)	14
7. a Vray dieu d'amours	15
b Vray dieu d'amor (keyboard version)	17
c Vray dieu d'amours (Verona version)	19
8. Vray dieu quel paine (keyboard version)	21
MOTETS	
9. Ave castissima	22
10. Ave Maria Virgo serena	24
11. Exortum est in tenebris	34
12. Hic est vere martyr (keyboard version)	36
13. Magnificat	37
14. Memorare Mater Christi	45
15. Salve Regina	56
16. Sensus carnis mors est	65
17. Virga tua et baculus tuus	66

Facsimile I. Cambrai, Bibliothèque Municipale, Ms. 125-8, superius, fol. 123^r. Above is the superius of Pipelare's *Ic weedt een molenarinne*. The chanson below is *Vous perdez temps* by Claudin de Sermisy.

Facsimile II. Bruxelles, Bibliothèque Royale, Ms. 215-16, fol. 33^v-34^r. Beginning of Pipelare's *Memorare Mater Christi*.

1 Een vrolic wesen

SUP. *Een vroue - lic wes - senn myn oog -*
ALTUS *Een vrolic wessenn*
TENOR *Een vroelic wessenn*
BASSUS *Een vroelic wessenn*

kins sa ghen,

wien ic ghe - trou - wic - heyt moet thoe scrij

ven, al wilt my haer