

CORPVS MENSVRABILIS MVSICAE

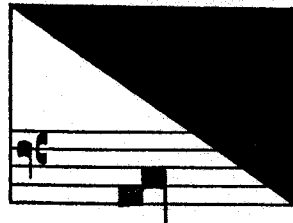
34

MATTHAEVS PIPELARE  
OPERA OMNIA

Edited by

Ronald Cross

II



AMERICAN INSTITUTE OF MUSICOLOGY

1967



## TABLE OF CONTENTS

CRITICAL COMMENTARY . . . . .	IX
-------------------------------	----

### FACSIMILES

I. Vienna, Nationalbibliothek, Ms. 11883, fol. 175v. Melody upon which Pipelare's <i>Missa Dicit Dominus: Nihil tuleritis in via</i> is based	XIII
II. Vienna, Nationalbibliothek, Ms. 11883, fol. 170v-171r. The <i>Pleni</i> of Pipelare's <i>Missa Dicit Dominus: Nihil tuleritis in via</i> . . . . .	XIV

### MUSIC

18. Credo de Sancto Johanne Evangelista . . . . .	1
19. Missa de feria . . . . .	10
20. Missa Dicit Dominus: Nihil tuleritis in via . . . . .	23
21. Missa Floruit egregius infans Livinus in actis . . . . .	54
22. Missa Fors seulement . . . . .	82

18  
Credo de Sancto Johanne Evangelista

Musical score for the first system, measures 1-4. It features four vocal parts: Triplum, Contra, Tenor, and Bassus. The lyrics are "Pa - trem - o - mni -".

Musical score for the second system, measures 5-8. It features four vocal parts. The lyrics are "pot - en - tem, fa - cto - rem cae - li".

Musical score for the third system, measures 9-12. It features four vocal parts. The lyrics are "Vi - si - bi - li - um o - mni - et - ter - rae." and "cto - rem cae - li et ter - rae, vi - si - bi - li -".

Musical score for the fourth system, measures 13-16. It features four vocal parts. The lyrics are "um et in - vi - si - bi - li -" and "um o - mni - um et in - vi - si - bi - li -".