

CORPVS MENSVRABILIS MVSICAE

58

ELZIARII GENETI (CARPENTRAS)

OPERA OMNIA

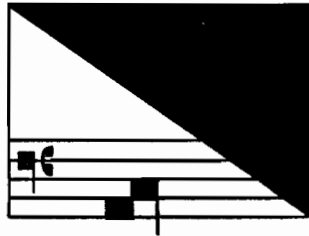
Edidit

Albertvs Seay

IV

Pars secunda

MOTETS



AMERICAN INSTITUTE OF MUSICOLOGY

1972

CORPUS MENSURABILIS MUSICAE

ARMEN CARAPETYAN, Ph. D.

General Editor

ELZÉAR GENET (CARPENTRAS)
COLLECTED WORKS

Edited by

Albert Seay

AMERICAN INSTITUTE OF MUSICOLOGY

12

Octavi Toni

In diebus ferialibus

[Verse 2]

Et ex - sul - ta - vit spi - ri - tus me - us,

us, in De - o sa - lu - ta - ri me - o.

[Verse 4]

Qui - a fe - cit mi - hi ma - gna qui po - tens

est, et san - ctum no - men e - ius.

75

ia, al - le -
ia, al - le - lu - ia, al - le - lu -
al - le -
lu - ia, al - le - lu - ia, al - le -

Detailed description: This block contains the musical score for measures 75 through 79. It features four staves: two vocal staves (Soprano and Alto) and two piano accompaniment staves (Right and Left Hand). The key signature has one sharp (F#) and the time signature is 8/8. The lyrics are: "ia, al - le -", "ia, al - le - lu - ia, al - le - lu -", "al - le -", and "lu - ia, al - le - lu - ia, al - le -".

80

lu - ia, al - le - lu - ia.
ia, al - le - lu -
lu - ia.
lu - ia, al - le - lu - ia.

Detailed description: This block contains the musical score for measures 80 through 84. It features four staves: two vocal staves (Soprano and Alto) and two piano accompaniment staves (Right and Left Hand). The key signature has one sharp (F#) and the time signature is 8/8. The lyrics are: "lu - ia, al - le - lu - ia.", "ia, al - le - lu -", "lu - ia.", and "lu - ia, al - le - lu - ia.".

19

5

Al - ma, al -
Al - ma,
Al - ma, al -

Detailed description: This block contains the musical score for measures 1 through 4. It features four staves: two vocal staves (Soprano and Alto) and two piano accompaniment staves (Right and Left Hand). The key signature has one sharp (F#) and the time signature is 15/8. The lyrics are: "Al - ma, al -", "Al - ma,", and "Al - ma, al -".

10

ma, al -
al - ma, al -
ma, al -
Al -

Detailed description: This block contains the musical score for measures 5 through 8. It features four staves: two vocal staves (Soprano and Alto) and two piano accompaniment staves (Right and Left Hand). The key signature has one sharp (F#) and the time signature is 15/8. The lyrics are: "ma, al -", "al - ma, al -", "ma, al -", and "Al -".

[Verse 11] 185

Glo - ri - a Pa - - -
Glo - ri - a Pa - - -

This system contains four staves of music. The first staff is the vocal line, starting with the lyrics 'Glo - ri - a Pa - - -'. The second staff is a piano accompaniment. The third and fourth staves are empty. The music is in 3/4 time and has a key signature of one flat.

190

tri,
tri, Glo - ri - a Pa - - -
Glo - ri - a Pa - - -
Glo - ri - a Pa - - -

This system contains four staves of music. The first staff continues the vocal line with 'tri,'. The second staff has 'tri, Glo - ri - a Pa - - -'. The third staff has 'Glo - ri - a Pa - - -'. The fourth staff has 'Glo - ri - a Pa - - -'. The music continues in 3/4 time with one flat.

195

Glo - ri -
tri, Glo -
tri,
tri,

This system contains four staves of music. The first staff has 'Glo - ri -'. The second staff has 'tri, Glo -'. The third staff has 'tri,'. The fourth staff has 'tri,'. The music continues in 3/4 time with one flat.

200

a Pa - tri et
ri - a Pa - tri et
Glo - ri - a Pa - tri et fi -
et fi

This system contains four staves of music. The first staff has 'a Pa - tri et'. The second staff has 'ri - a Pa - tri et'. The third staff has 'Glo - ri - a Pa - tri et fi -'. The fourth staff has 'et fi'. The music continues in 3/4 time with one flat.