

PIERRE DE LA RUE
OPERA OMNIA

Ediderunt

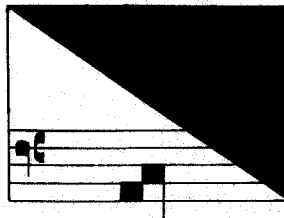
NIGEL ST. JOHN DAVISON

J. EVAN KREIDER

T. HERMAN KEAHEY, CO-ORDINATOR

V

- 21. *MISSA O GLORIOSA MARGARETHA (Keahey)*
- 22. *MISSA O SALUTARIS HOSTIA (Davison)*
- 23. *MISSA PASCALE (Kreider)*
- 24. *MISSA PRO FIDELIBUS DEFUNCTIS (Davison)*
- 25. *MISSA PUER NATUS EST NOBIS (Davison)*



AMERICAN INSTITUTE OF MUSICOLOGY
HÄNSSLER-VERLAG

1996

67.971/50

Copyright © 1996

American Institute of Musicology

Hänssler-Verlag, D-73762 Neuhausen

Order Number 67.971/50

ISBN 3-7751-2402-0

CONTENTS

PREFACE	XII
CRITICAL NOTES	
16. <i>MISSA O GLORIOSA MARGARETHA</i>	XV
17. <i>MISSA O SALUTARIS HOSTIA</i>	XXVII
18. <i>MISSA PASCALE</i>	XXXVI
19. <i>MISSA PRO FIDELIBUS DEFUNCTIS</i>	XLVIII
20. <i>MISSA PUER NATUS EST NOBIS</i>	LX
MUSIC	
16. <i>MISSA O GLORIOSA MARGARETHA</i>	1
17. <i>MISSA O SALUTARIS HOSTIA</i>	29
18. <i>MISSA PASCALE</i>	58
19. <i>MISSA PRO FIDELIBUS DEFUNCTIS</i>	102
20. <i>MISSA PUER NATUS EST NOBIS</i>	126

21. MISSA O GLORIOSA MARGARETHA

KYRIE

Musical score for Soprano (S), Alto (A), Tenor (T), and Bass (B) parts, measures 1-9. The score is in G major and 4/4 time. The lyrics are: Ky-ri-e lei-son, Ky-ri-e. The Soprano part includes a fermata over the final note of the first phrase. The Tenor part includes the text "O GLORIOSA" and "MARGARETHA".

Musical score for Soprano (S), Alto (A), Tenor (T), and Bass (B) parts, measures 10-14. The lyrics are: e lei-son, Ky-ri-e e-lei-son, Ky-ri-e lei-son. The Soprano part includes a fermata over the final note of the first phrase.

Musical score for Soprano (S), Alto (A), Tenor (T), and Bass (B) parts, measures 15-24. The lyrics are: Ky-ri-e lei-son, Ky-ri-e lei-son, Ky-ri-e e-lei-son, Ky-ri-e e-lei-son. The Soprano part includes a fermata over the final note of the first phrase. The Tenor part includes the text "CHRISTUM".