

JOHANNIS REGIS
OPERA OMNIA

Edidit

Cornelis Lindenburg

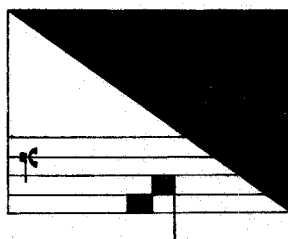
I

Missae

Dum Sacrum Mysterium (L'Homme Armé)

Ecce Ancilla Domini

Fragmentum missae Patrem Vilayge



Copyright 1956
by
Armen Carapetyan

CONTENTS

FOREWORD	I
CRITICAL NOTES	III
FACSIMILES	IX
MUSIC	
Missa Dum Sacrum Mysterium (L'Homme armé)	1
Missa Ecce Ancilla Domini	25
Fragmentum missae Patrem Vilayge	62

MISSA DUM SACRUM MYSTERIUM (L'HOMME ARMÉ)

KYRIE

Superius
Ky - ri - e (e - le -

Contratenor altus
Ky - ri - e (e - le -

Tenor

Contratenor bassus
Ky - ri - e (e - le -

- i - son, e - le - - i - son, e -) le -

- i - son;) Dum sa - crum my - ste - ri - um cer - ne - ret Jo - han -

Dum sa - crum my - ste - ri - um Ky - ri - e

i - son, e - ley - son, e - le -

- i - son. Ky - ri - e

nes, ley - son. Ky - ri - e e - le -

e - le - i - son. Mi - cha - el arch - an - ge - lus tu -

- i - son. Ky - ri - e (e - le - i - son,