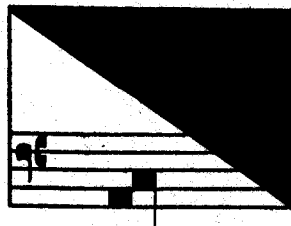


JACOBI ARCADELT  
OPERA OMNIA

Edidit  
Albertvs Seay

Missa Noe Noe  
Missa Ave Regina Caelorum  
Missa De Beata Virgine



PUBLISHED BY THE  
AMERICAN INSTITUTE OF MUSICOLOGY  
IN COLLABORATION WITH THE  
AMERICAN MUSICOLOGICAL SOCIETY

1965



# Missa Noe Noe

## I Kyrie

Musical score for the first system, measures 1-5. It features four staves: vocal line (Soprano/Alto), Tenor, Bass, and Piano accompaniment. The vocal line begins with the lyrics "Ky - ri - e e - ley - son, Ky - ri - e e - ley -". A fermata is placed over the final notes of the first phrase, with a "5" above it. The piano accompaniment provides harmonic support with chords and moving lines.

Musical score for the second system, measures 6-10. The vocal line continues with "son, e - ley - son, Ky - ri - e e - ley - son, Ky - ri - e e - ley -". The piano accompaniment continues with harmonic support. A fermata is placed over the final notes of the second phrase, with a "10" above it.

Musical score for the third system, measures 11-15. The vocal line continues with "Ky - ri - e e - ley - son, son, Ky - ri - e e - ley - son, Ky - ri - e e - ley - son, Ky - ri - e". The piano accompaniment continues with harmonic support. A fermata is placed over the final notes of the third phrase, with a "15" above it.

Musical score for the fourth system, measures 16-20. The vocal line continues with "son, Ky - ri - e e - ley - son, e - ley - son, Ky - ri - e e - ley - son, Ky - ri - e". The piano accompaniment continues with harmonic support. A fermata is placed over the final notes of the fourth phrase, with a "20" above it.