

CORPVS MENSVRABILIS MVSICAE

65

HENRICI ISAAC

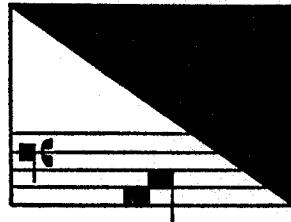
(ca. 1450-1517)

# OPERA OMNIA

EDIDIT

EDWARD R. LERNER

II



AMERICAN INSTITUTE OF MUSICOLOGY

1974



## CONTENTS

FOREWORD . . . . .	IX
ABBREVIATIONS . . . . .	IX
CRITICAL NOTES . . . . .	X
MUSIC	
5. <i>Missa Paschale</i> . . . . .	1
6. <i>Missa Solenne</i> . . . . .	25
7. <i>Missa de Beata Virgine (I)</i> . . . . .	48
8. <i>Missa de Beata Virgine (II)</i> . . . . .	72
APPENDIX	
<i>Plainsongs</i> . . . . .	93

5. MISSA PASCHALE

KYRIE

H. Isaac

D Kyrie Ky - ri - e Ky - ri - e

CT Kyrie Ky - ri - e

T Kyrie Ky - ri - e e - lei - son Ky -

V Kyrie Ky - ri - e

B Kyrie Ky - ri - e

5 ri - e e - lei - son Ky - ri - e e - lei -

Ky - ri - e

ri - e e - lei - son

e Ky - ri - e

ri - e

10 son Ky - ri - e e - lei -

Ky - ri - e e - lei - son e -

Ky - ri - e

Ky - ri - e e - lei - son