

CORPUS MENSURABILIS MUSICAE

100

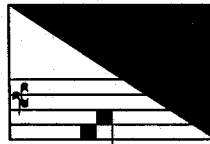
SALAMONE ROSSI  
COMPLETE WORKS

Edited by  
DON HARRÁN

PART III  
SACRED VOCAL WORKS IN HEBREW

Volume 13a      השירים אשר לשלמה  
(*Hashirim 'asher lishlomo* / “The Songs of Solomon”)

GENERAL INTRODUCTION



AMERICAN INSTITUTE OF MUSICOLOGY

## AMERICAN INSTITUTE OF MUSICOLOGY

The American Institute of Musicology publishes seven series of critical editions, scholarly studies, reference works, and a journal all dedicated to the study of Medieval, Renaissance, and early Baroque eras. The publications of the Institute are used by scholars and performers alike and constitute a major core collection of early music and theoretical writings on music.

Musica disciplina (MD)  
Corpus mensurabilis musicae (CMM)  
Corpus of Early Keyboard Music (CEKM)  
Musicological Studies and Documents (MSD)  
Renaissance Manuscript Studies (RMS)  
Corpus scriptorum de musica (CSM)  
Miscellanea (MISC)

For information on establishing a standing order to any of our series, or for editorial guidelines on submitting proposals, please contact:

American Institute of Musicology, Inc.  
Middleton, Wisconsin  
800 736-0070 (U.S. book orders)  
608 836-9000 (phone)  
608 831-8200 (fax)  
<http://www.corpusmusicae.com>  
[orders@corpusmusicae.com](mailto:orders@corpusmusicae.com)  
[info@corpusmusicae.com](mailto:info@corpusmusicae.com)

© 2003 by American Institute of Musicology, Inc. All rights reserved. No part of this book may be reproduced or transmitted in any form by any electronic or mechanical means (including photocopying, recording, or information storage and retrieval) without permission in writing from the publisher.

The American Institute of Musicology is pleased to support scholars and performers in their use of its publications material for study or performance. Subscribers to CMM or CEKM, as well as patrons of subscribing institutions, are invited to apply for information about our "Copyright Sharing Policy."

ISBN 0-97250-622-5

Printed in the United States of America. (∞) The paper used in this publication meets the minimum requirements of the American National Standard for Information Sciences—Permanence of Paper for Printed Library Materials, ANSI Z39.48-1984.

# CONTENTS

## VOLUME 13a: GENERAL INTRODUCTION

|   |       |
|---|-------|
| ILLUSTRATIONS   | ix    |
| ABBREVIATIONS   |       |
| General   | xi    |
| Bibliographical   | xiii  |
| In Original Prefatory Matter  | xviii |
| GLOSSARY  | xx    |
| FOREWORD  | 1     |
| SOURCE  | 5     |
| EDITION   | 12    |
| HEBREW TRANSCRIPTION  | 18    |
| INTRODUCTION  | 28    |
| COMMENTARY  | 49    |
| <sup>1</sup> 49 <sup>2</sup> 52 <sup>3</sup> 54 <sup>4</sup> 55 <sup>5</sup> 57 <sup>6</sup> 59 <sup>7</sup> 60 <sup>8</sup> 64 <sup>9</sup> 66 <sup>10</sup> 67 <sup>11</sup> 69                 |       |
| <sup>12</sup> 71 <sup>13</sup> 72 <sup>14</sup> 74 <sup>15</sup> 75 <sup>16</sup> 77 <sup>17</sup> 79 <sup>18</sup> 80 <sup>19</sup> 82 <sup>20</sup> 84 <sup>21</sup> 85 <sup>22</sup> 87        |       |
| <sup>23</sup> 91 <sup>24</sup> 92 <sup>25</sup> 94 <sup>26</sup> 99 <sup>27</sup> 101 <sup>28</sup> 107 <sup>29</sup> 112 <sup>30</sup> 115 <sup>31</sup> 118 <sup>32</sup> 120 <sup>33</sup> 123 |       |
| BIBLIOGRAPHY  |       |
| Primary Sources   | 132   |
| Secondary Literature  | 139   |
| INDICES OF WORKS  |       |
| Alphabetical Index  | 148   |
| Index by Text Types   | 148   |
| Index by Modes  | 149   |
| Index by Liturgical and Other Uses  | 150   |
| Index of Latin Equivalents in the Vulgate   | 158   |
| ORIGINAL PREFATORY MATTER   |       |
| Title Page  | 161   |
| Rossi's Dedication  | 163   |
| Two Dedicatory Poems  | 170   |
| Leon Modena's Foreword  | 175   |
| A Third Dedicatory Poem   | 187   |
| Judgment:   |       |
| Question put to Leon Modena about the use of art music in the synagogue   | 193   |
| Modena's response   | 195   |
| Five rabbinical statements of approval  | 212   |
| Copyright Notice  | 220   |