

CORPUS MENSURABILIS MUSICAE

107

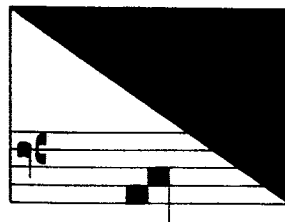
TROUVÈRE LYRICS WITH MELODIES  
COMPLETE COMPARATIVE EDITION

by

HANS TISCHLER

VOLUME XIV

Introduction II, Rondeaux 1-45, Lais 1-28



AMERICAN INSTITUTE OF MUSICOLOGY  
HÄNSSLER-VERLAG

1997

68571/114

Copyright © 1997

American Institute of Musicology

Hänssler-Verlag, D-73762 Neuhausen

Order Number 68.571/114

ISBN 3-7751-2911-1

# PART II

## TABLE OF CONTENTS

### INTRODUCTION II

#### I. The pre-Machaut Lais

1. Terminology . . . . .	page	1
2. Types of Early Lais . . . . .		3
3. Editions and Studies . . . . .		4
4. Method of Presentation . . . . .		5
5. Editorial Problems . . . . .		7
6. The Use of Melodic and Rhythmic Modes in Lais . . . . .		11
7. The Structures of Lais . . . . .		12
8. The Texts . . . . .		15
9. On Versification . . . . .		18
10. Aesthetic Aspects . . . . .		20

#### II. The Rondeaux

1. Editions and Studies . . . . .		22
2. The Texts . . . . .		23
3. The Melodies . . . . .		24
Notes . . . . .		26
III. List of Lai Incipits . . . . .		28
Table of the Lais . . . . .		30
List of Rondeau Incipits . . . . .		34
Table of the Rondeaux . . . . .		36

Tu Ba  
Mo

1. *Bele Y - sa - be - lot m'a mort,* 2. *bele Y - sa - be - lot.*

Tu Ba  
Mo

3. *Quant Y - sa - be - los fu ne - e,* 4. *A - mours fu - rent en e - smai.*  
5. *Ele est plus en - cou - lo - re - e* 6. *que ne soit la rose en mai.*

Tu Ba  
Mo

7. *He Dieus, dous Deus, que fe-rai?* 8. *Pour sa grant biau - tei morrai!*

Tu Ba  
Mo

9. *E - le mi het et je l'ains trop,* 10. *bele Y - sa - be - lot.*

Tu Ba  
Mo

11. *Bele Y - sa - be - lot m'a mort,* 12. *bele Y - sa - be - lot.*